



Speak Up, Epping! Newsletter

Volume 11, Issue 1

Epping, New Hampshire

January-February, 2018

About this Newsletter

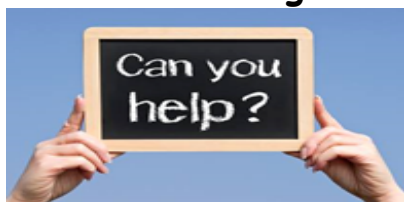
This Newsletter is produced by the Speak Up, Epping! Communications Group. The purpose of the newsletter is to provide information about upcoming events and pertinent information from community organizations. Please note that no editorial, political or religious views will be accepted and the Communications Group reserves the right to edit submissions. If you would like to submit material for and/or receive this newsletter electronically, please visit our website at www.speakupepping.com

Check Out Our Newsletter Website

Be sure and check out our Speak Up, Epping! website: www.speakupepping.com. Each new issue of the Newsletter will be available by downloading it from the website. You can also access news from the issue separately by topic and find late-breaking news, past Newsletters, town links and calendars.

Also, check out our **Facebook** page! Join us for more late-breaking news and events that did not make our Newsletter deadline.

End 68 Hours of Hunger - Epping



The Program Coordinators of the Epping End 68 hours of Hunger Program would like to thank all of our volunteers, local businesses that continuously support us, our school, and this wonderful community we are blessed to be a part of, for a great 2017! Your generosity is making a very big difference in the lives of the children we support

both in the home and on the school front! We can't thank you enough! We are looking forward to what 2018 will bring! God bless you all and happy holidays!



Submitted by Tasha Morrison, Coordinator

Senior Moments

You know the Epping Watson Academy Senior Citizens Club likes to go and do. 2018 will be no different. Another year, another number, just like our age. It really is a big number though when you were born in the 30's.

Once again the Walgreen Pharmacist met with us. You'd think we knew it all by now but the laws keep changing. And like a thief in the night, the costs creep up while we are asleep. Meds are \$200 to \$400 a month for some. Our concerns are valid because we are that statistic our legislators talk about, but they sometimes forget that we seniors are still here. Someday, we're going to have a contest among our members to see who takes the most pills. I'll let you know the total number.

We did get to visit Nicole Bizzaro's new home. What can I say? It's beautiful. You can feel the warmth inside by imagining their busy lifestyle with two active kids and the finishing touch of that adorable, lovable puppy. Big is right for them. Congrats Nicole.

Our annual trip to see the Loudon Christmas lights was our way to begin the Holiday Season. Nicole drove us through the beautiful endless display on a pretty warm night. And of

course, we later found ourselves in the parking lot of the 99 Restaurant for dinner. Surprise!

This year we had the opportunity to help the Fire Department and Recreation Department preparing gifts for Epping Children. Under Nicole's guidance, we were able to play Santa for a while and fill bags and bags of toys and clothes. You couldn't really call it work, as we enjoyed that good warm feeling helping to make Christmas brighter for each child. We were overwhelmed with all of the many donations received. Pat yourselves on the back, Epping residents. You done good!

Our 2017 Christmas Party is behind us and everyone had a good time. I noticed the food disappeared quickly and the gifts seemed so appropriate. Actually fate stepped in and two friends received similar gifts as almost an "exchange". Someone even received a gift they brought the year before. Will that be a new trend? "What goes around comes around." Mr. David Shikes, humorist, returned to add the laughter to a very happy holiday gathering. Another BIG thank you to our American Legion who was our host again.

Readers may find it hard to believe seniors are so busy. And it's not that we do it slower. We just try to do it all until we can't. But the concert at the school was a wonderful break to sit, relax, visit with friends and enjoy the amazing music those young people can deliver. It wasn't like this when we were kids. It makes us so proud of our schools and those great kids. A big thank you to them. The Christmas spirit is alive and well in Epping.

New Year's Eve will find us warmly tucked in our beds but the New Year will provide opportunities for us to enjoy life with friends. Some of the trips will include the Currier Museum, the New Hampshire Airport museum and some more factories which we really enjoy. One day our lunch date will be at the Culinary School in either Manchester or Exeter. Maybe both. That should be a test for us picky eaters. Our first project for the new year is collecting items for our soldiers again. It's bad luck to put up your new calendar before the new year so I have no idea what dates I'm talking about.

No trivia talk to end my report this time. Rather ending on a sad note. Our beloved Barbara Camire has passed away. She was very special to the Club and to me. Barbara was a charter member and the first Treasurer back in 1999 when our Club was born. One day, just five of us sat

around that small table at Watson and decided it was time to leave the nest of the Raymond Club and fly on our own. Creating by-laws, programs and file systems was fairly easy but when it came to finance, Barbara came to our rescue. She was also my longtime friend and classmate traveling through the Epping schools together. We miss her.

Stay healthy!

Submitted by Irene R. Cote, Secretary

News From the Town

There is now a NEW Website for reviewing Epping meetings online: etv22.viebit.com.

Town Hall Closed

December 25th – Christmas

January 1st – New Year's Day

January 15th – Martin Luther King Day

February 19th – Presidents' Day

Other Town Dates

January 9th – Last day for Petition Warrant Articles

January 10th – Public Budget hearing

Jan. 24-Feb. 2 – Filing period for Town offices

February 6th – Town Deliberative Session

February 8th – School Deliberative Session

February 21st – Candidates Night

March 13th – Town Voting Day!

Decorating the Town Hall Christmas Tree

Usually the Town Hall staff does something special for veterans or special patrons for Christmas. This year we are opening it up for anyone who may want to donate too! The Epping staff is creating a hat and mitten Christmas tree for homeless veterans. We will be decorating a Christmas tree with hats, mittens, gloves and scarves instead of bulbs, lights and tinsel. All these donations will be delivered to a local homeless veterans' shelter after the holidays for the cold weather. If anyone else wants to help decorate the Christmas tree, please drop these items off with Joyce in the Selectmen's office. If you prefer to make a monetary donation, we will shop for you. The Christmas tree will be left up until January 5th.

Cell Phones for Our Troops

Donate your old cell phone.

More than 150,000 troops are serving overseas and are away from their families. Please make a

donation of your old cell phone so they can call home, providing these soldiers with a much needed connection to their loved ones. There is a drop-off box at the Epping Town Hall for your convenience.

The Pease Greeters Need Our Help!

The Pease Greeters, hundreds of volunteers, meet our Armed Forces any time of day or night, as they pass through Pease International Airport on their way to a war zone or on their way home. For more than eleven years, Greeters have welcomed service members on every flight with a warm meal and beverage, small gifts, a cell phone to call home and a hearty round of applause. And for that we give the Greeters our warmest and most sincere thanks. The Pease Greeters began welcoming flights in 2005 and a few months ago reached the milestone of having welcomed 1000 flights. Recently, the number of flights through Pease has increased and the Pease Greeters are in need of **monetary help**. We need to support our service men and women any way we can. If you can give any amount, please make a check payable to Pease Greeters and send or drop it off to Joyce at the Town Hall.

To learn more about the Pease Greeters, sign up for flight alerts or to make a contribution, visit www.peasegreeters.org.



Epping Lions Club

"We Serve"

We Want YOU to Join the Epping Lions Club

<https://www.facebook.com/EppingsLionsClub>
www.epping.nhlions.org

The Epping Lions Club was established in April 2009. We support sight programs and services including vision screenings and eyeglass recycling, and we provide assistance to local families in need of eyeglasses. In July, we turned in 965 pairs of glasses for recycling, collected at several collection boxes around town. We support community programs as well as participate and sponsor some exciting events, such as the Lamprey River Canoe Race, the Highnote Festival and our annual Gas Card raffle. The raffle is a fundraiser that goes towards providing Marshalls gift cards for Christmas to many deserving Epping families.

We are looking for innovative people who desire to become involved in improving our community and having fun doing it. If you're interested in

learning more, please visit our website at: www.epping.nhlions.org. Meeting times are posted and are generally the 4th Tuesday of the month at 6:30 pm. We currently meet at the Harvey-Mitchell Memorial Library in Epping. With your involvement and ideas we look forward to creating even more special fundraising events. We understand people have busy lives and the Lions Club allows you to volunteer as little or as much as you like. We'd love to see you!

Colleen Palmer, President

colleenmariepalmer@hotmail.com

Cheryl Denoncour, Treasurer

cdenoncour@gmail.com

Deb Brooks, Eyeglass Collector

lexusreina@comcast.net

Epping Historical Society

Welcome to the New Year! We, at the Epping Historical Society are looking forward to new and exciting times! Just think, by the time the next issue of Speak Up, Epping! is published, we will be looking forward to SPRING!!

In November we had our roof replaced at the Society. Who knew there were three layers of shingles on the roof? If you were in the neighborhood on that day, it looked like ants all over the building! They were an amazing crew! They stripped and replaced the whole roof in one day! We should be good for another twenty years, or more.

So many folks have been extra generous this year, making many donations to the Society. When Elwyn Dearborn passed, his many friends all over the United States contributed to the Society, per Elwyn's wishes. Also we have many friends in town that are appreciative that we are here recording and saving Epping history, and have opened their hearts and wallets to help.

We have just replaced our old carpeted floor in the main room with wood laminate. If you have visited us, you are aware of our collections, heavy furniture (including the large Judge's desk) and research material and hundreds of books. Everything had to be moved and then put back in place. A daunting job, and thanks to our volunteers, it was accomplished. A special thanks to our "SUPER" volunteer, Forrest, who installed the new floor. We are planning an Open House in the spring, so all can see the many changes that have taken place.

We have a couple of programs planned for the spring. We will present the power point program of Olde Epping. This is a very popular program; come and see if we have old pictures of your house, or houses you see every day on your travels around Epping. We are always looking for suggestions for programs. What would you like to see? The most requested information is from the new residents in town, inquiring about the area where they live, or if living in an older house, a history of the people who previously lived there. We can provide limited information on their house, but probably have more information on the previous occupants.

A very short list of what we have available at the Society: old maps, genealogies, town histories, old newspapers, birth, marriage and death records, information on several organizations, railroads, shoe shops, mills, schools, Churches and lots of other interesting items, too numerous to mention.

Town Clock

Our new Town Hall was constructed in 1893. It is a beautiful building, but the clock intended for the tower is missing. It seems that when the building was completed, the clock was too large to fit in the tower. The clock had been specially made, but the access was not large enough for the clock to be installed. The building committee consulted with the clock manufacturer to see if any changes could be made to the clock so it would fit. But after much discussion, it was decided the clock would be installed in the Congregational Church on the corner. The clock was still in the center of the village, so all could enjoy the benefit of having a "Town Clock".

I spent some time reviewing old town reports, and discovered that from 1893 to 1902, we paid someone to "wind the town clock at the Congregational Church" every year. This was only a nine year period. I am sure the town continued paying for someone to wind the clock. The rate of pay was \$15.00 per year. How many trips did this man make to wind the clock for a whole year?

Over the years many residents of the town have volunteered their time to keep the clock wound and working. Sadly, the clock was out of commission for a while, the Church bells not ringing, and the hands stopped. However, recently, several dedicated volunteers have repaired the clock works, and the bells are ringing once again!

The Town Clock in the Congregational Church tower is a very historical icon. It is important to continue to maintain the clock and keep it working

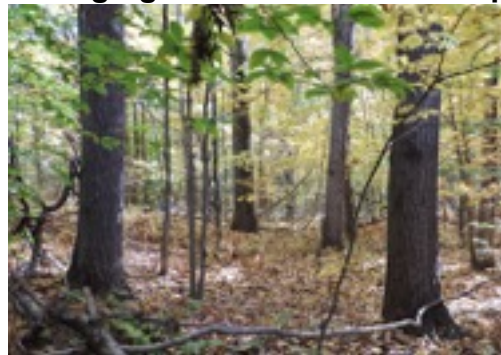
for all of us to enjoy. The Church bells ringing define what a small town is all about. People pause and glance at the clock, check the time, and continue on their way. The clock has been keeping time for 124 years, and we hope it will do so for the next 100 years!!

Come visit us at the Society. We are open Monday morning, 8:00 to 12:00, or when the flag is flying! If this is not convenient for you, please call 679-2944 for an appointment or email me at: joysgarden@hotmail.com.

Submitted by Joy True, curator, Epping Historical Society

Nature Talks

Managing Town Forestland in Epping



Mature big tooth aspens (poplars) and young regrowth at Fox Run Park

The town of Epping owns several parcels of land conserved and managed by the Conservation Commission. Walking trails and kiosks have been developed on some, so the townspeople can get out and enjoy the outdoors. A large part of maintaining these parcels is proper management of the trees growing on them. A few of the past members of the commission took on the role of managing these forests.

Jerry Langdon, who manages his own forestland in town, took the lead in working with a forest manager and the loggers who do the work. I have been in the Forestry group with him, along with a few others over the years. Charlie Marino is a well-respected forest manager who works with us to be sure the properties are maintained in a way that produces the best types of trees for the lands they are on, looking for good results 20 or 50 years down the road. When the trees are cut, any income goes back to the town and some of that can be used for trails or maintenance to keep them accessible to the people in the area.

Before any work is done we look at any special features of the land to be sure to preserve what is

there. A few Big Trees are registered with the state and these are labeled as "not to be cut." Wetlands are avoided and wildlife needs are considered. The conservation commission or selectmen are notified of what is going on and asked for their input.

When the work is first done, it will look much different and concerns are sometimes expressed about the cutting of the trees. The town does not own larger town forests of a few hundred acres as many other towns do, where the thinning of the trees can be done on different sections of the land spread over many years. This is not as noticeable as some of our cuts on 11 to 40 acre lots that the town of Epping owns. Just keep in mind that the conservation commission has the best interests of the woods and the townsfolk in mind as we manage our lands. The temporary messy looking properties will soon be growing new young trees and the larger and older trees have been given the room to improve.

At a time when most of the available land in our area is developed, we are lucky in Epping to have some woodlands set aside by the town. Many other acres have also been preserved by local conservation groups. Our hope is that all this land will be well-managed so future generations of people and wildlife can enjoy them.

Submitted by Kevin Martin- Forestry Committee

The Civil War Roundtable of NH



*NH graves at Soldiers' Cemetery in Gettysburg
(Photo by Bill Hallett)*

The Civil War Roundtable of New Hampshire welcomes anyone with an interest in the American Civil War who would like to be with others who share the same desire to learn more of this time in American history. We are an informal club with the only requirement being a Civil War enthusiast. If you or a friend has an interest in the American Civil War, we invite you to come check us out.

Founded in May 1991, the Civil War Roundtable of New Hampshire is a group of men and women, young and old, who share our interests, both blue

and gray, in the pivotal era of American history known as the Civil War. We are open to the public and welcome all! As our slogan goes, "There's no time like the present to join us in the past."

For more information on the group and a complete schedule of meetings and news, please visit the web site: www.cwrt-nh.org or email cwrtnh@gmail.com.

This is the upcoming CWRT-NH schedule:

We are currently booking 2018 meetings. If you know of someone, or would like to offer a talk to our group, please email: cwrtnh@gmail.com

Note: The schedule is subject to change without notice. You can access the CWRT-NH website for the current schedule. If a meeting is cancelled, a notice will be put on ETV.

January 19, 2018 – Mike Schroeder (pres. CWRTNH) - "Union Combined Operations: Freeing the Upper Mississippi - 1862."

February 16, 2018 – William Quigley "Pure Heart" (book)

March 16, 2018 ~ John Hayward (NH author) - "5th New Jersey at Gettysburg"

April 20, 2018 ~ Ronald J. Guilmette - "First to Serve" (book on Massachusetts State Police creation out of the Civil War)

May 18, 2018 ~ TBA

June 15, 2018 ~ A. Wilson Green (retired head of Pamplin Park Museum) - "Petersburg"

Lamprey Rivers Advisory Committee Improving Nesting Sites for Blanding's Turtles



Blanding's turtle Photo by Jon Bromley

Blanding's turtles are listed as endangered in New Hampshire. They have large ranges and require diverse habitats to meet their physiological and reproductive needs. Because they need to travel, they are at an increased risk for encounters with vehicles and predators. Females produce only a dozen or so eggs each year and they do not

reach sexual maturity until 15 to 20 years of age. Like most turtles, they lay eggs in sandy or gravelly soils, but Blanding's turtles often select dangerous sites such as sandy road shoulders.

Recent construction work to widen Route 108 included the elimination of sandy shoulders to discourage female turtles from laying eggs near the roadway. Much of this area passes through conserved land managed by the Great Bay National Estuarine Research Reserve and the New Hampshire Fish and Game Department. Staff from the two organizations are teaming up to investigate the potential for encouraging Blanding's turtles to utilize man-made nesting sites located in safer, more suitable areas so that nesting females and hatchlings are not put in peril. Work to create these nesting sites was started in December 2017. The Lamprey Rivers Advisory Committee is pleased to provide financial support for this project and looks forward to seeing the results of the experiment as a potential means to help Blanding's turtles in other vulnerable areas.

Wild and Scenic Rivers Act Turns 50



It's your river. Make a splash!

According to the National Park Service, there are approximately 3.6 million miles of streams in the United States. 1.1 million are at least five miles in length. Only 12,734 miles are protected by the Wild & Scenic Rivers Act – only 0.35% of the rivers found here. But what a wonderful 12,734 miles! Wild and Scenic rivers include the Allagash, Salmon, Snake, Missouri, Concord, Four Mile, Trinity and our very own Lamprey.

How did these rivers come to be “Wild and Scenic”? The Wild and Scenic Rivers Act was created by the US Congress in 1968 (Public Law 90-542; 16 U.S.C 1271 et seq.) to preserve certain rivers with outstanding natural, cultural, and

recreational values for the enjoyment of present and future generations.

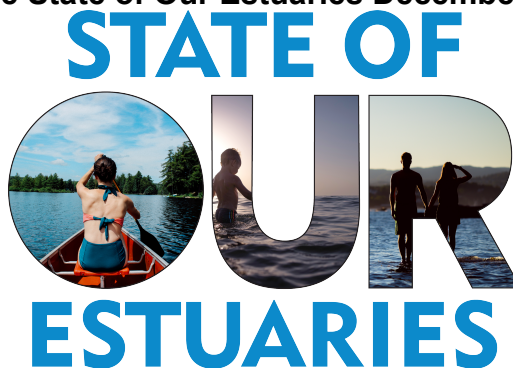
The Act is notable for safeguarding the special character of these rivers, while also recognizing the potential for their appropriate use and development. It encourages river management that crosses political boundaries and promotes public participation in developing goals for river protection.

One of the key motivations for the Wild and Scenic Rivers Act was the rapid and rampant construction of dams for hydroelectric power. The Act specifically noted that *“the established national policy of dams and other construction at appropriate sections of the rivers of the United States needs to be complemented by a policy that would preserve other selected rivers or sections thereof in their free-flowing condition to protect the water quality of such rivers and to fulfill other vital national conservation purposes.”*

As the Act nears a half century of protecting some of our greatest rivers, we hope you'll join us in celebrating its accomplishments—and in working for its future. While there is much we have to do, there is much we have done, and to the thousands of people across the country who have worked tirelessly to save their local river, it's time to take a moment to celebrate, to congratulate each other, to look forward, to add to the 12,734 miles.

To learn more about the 50th anniversary of the Wild and Scenic Rivers Act, please visit <https://www.rivers.gov/wsr50/index/php>.

The State of Our Estuaries December 2017



Epping is not a coastal town, but what happens in Epping affects the estuaries and coast of New Hampshire. Epping is not alone in this fact; 52 communities in New Hampshire and southern Maine are located in the drainage area and are joined as stakeholders in the Piscataqua Region Estuaries Partnership, or PREP. The staff at PREP recently hosted a conference updating ecological

and social trends that help to paint a clear and true picture of how our estuaries, including Great Bay, are faring in the face of rapid development and change.

Over the last five years, scientists and other researchers have gathered lots of data and performed rigorous analyses for 24 indicators of environmental health and resilience. On the surface, our estuaries appear much as they have for as long as anyone can remember, but details below the surface and in the surrounding landscape are showing several symptoms of concern.

About half of the indicators are listed as cautionary, "...demonstrates possibly deteriorating conditions, a mixture of positive and negative trends, or moderate progress relative to the management goal." Four indicators are listed as negative: impervious surfaces (areas where water cannot soak into the ground due to pavement, roofs, etc.), eelgrass acreage, population of adult oysters, and population of adult clams. A negative rating demonstrates deteriorating conditions, generally poor conditions, or minimal progress relative to the management goal. Six indicators are listed as positive or improving: nutrients from wastewater treatment facilities, fecal bacteria, beach advisories, toxic contaminants, conservation land, and migratory fish restoration. The remaining four (salt marsh acreage, housing permits, stormwater management, and environmental volunteerism) are new indicators and, therefore, show no trend over time.

So what does this mean for you? What can you do? There is no one simple answer that will fix everything, but there are many simple things that each of us can do that will make a big difference: Learn about and take care of your septic system. Don't over-fertilize your lawn. Keep soil covered by plants. Direct stormwater run-off to areas where it can soak into the ground. Volunteer your time to pick up litter or be a citizen scientist to help to monitor migratory fish, water chemistry, or invasive species. (Visit the Stewardship Network newengland.stewardshipnetwork.org to learn about all sorts of volunteer opportunities.) Support efforts by the town conservation commission and local land trusts to protect natural land so that it can provide clean water to streams and people. Learn about our waters and share with friends, family, and your representatives why protecting them is important to you.

For the full report and more ideas on how we can help to protect our rivers, estuaries, and coast, visit www.StateofOurEstuaries.org or contact PREP at 603-862-3729.



*Helping communities protect the
Lamprey River.*

Submitted by Suzanne Petersen



Epping Garden Club

Thanks to all of you who purchased a wreath or a poinsettia in this year's holiday fundraiser.

We are hoping to work with our churches and students as well as the Grange Hall and Library for future sales. Joined efforts bring even more results in making this a true community. Please call us at 300-0064 if you'd like to make this happen.

Our current members will get together in January, but it will be for us to gather and unwind. The next meeting will be **Sunday, February 11th**. Come join us, as the topics discussed will be the gardens we maintain around town and pansies.

Do you have a spot near your home you can add color to and water and weed? Yes, it is hard work but so worth it as you drive through the town watching everything bloom. Maybe neighborhoods can adopt a corner and when you decide on plants give us your list and we will get you the best deals around. Pairing perennials and annuals will give you the most color choices. Throw in some herbs as well, so when you go to weed your garden you can cut some fresh for your meals.

We will discuss doing some future workshops where you make and take, as well as some speakers to offer you even more ideas on pulling your spaces together. Follow us on Facebook to hear the latest on upcoming events. Please follow the Garden Club Facebook Page for upcoming sales and events. If you are interested in joining us, please call me at 300-0064 or email eppinggardenclub@gmail.com.

Stay warm!

Submitted by Eunice Miller



Leddys Center

Although Dickens' "A Christmas Carol" was the Leddys Center's final main stage production, they

will continue to offer Musical Theater Classes and private lessons through May 2018!

They are now accepting registrations for their final semester of Musical Theater Classes and Private Lessons in Guitar, Voice and Piano. Classes begin the week of **January 15, 2018**.

For Students With Some Experience:

Advanced Musical Theater with
Melissa Ransdell!!!

Ages 9-15!! on Fridays 3:30 to 4:30 pm

Starting Friday, **January 19, 2018!!**

For Beginners:

Two Classes with
Danielle Stough!!

Beginner Musical Theater

Ages 7 to 9!! on Mondays 4:00 to 5:00 pm

Starting Monday, **January 15, 2018!!**

And Mini-Musical Theater

Ages 5 & 6!! on Wednesdays 4:00 to 4:50 pm

Starting Wednesday, **January 17, 2018!!**

The Musical Theater Spring Recital will be held at
Leddy Center on Saturday, May 5, 2018, at 10 am!!

Please visit our LEDDY SCHOOL tab on our website, www.leddycenter.org for more information and to print your registration form. All registration forms, fees and first half of tuition are due BEFORE the first day of class. (See website for full details.)

Note: the Leddy Office is open Tuesdays and Thursdays from 3-5 pm only! Phone: 679-2781.

Private Lessons Also Available!!!

GUITAR with Travis Shelby!

PIANO with Shelby Bennett!

VOICE with Josh Rotz!!

38c Ladd's Lane | PO Box 929 | Epping, NH 03042 |
679-2781.



ETV Schedule

Channel 22 – ETV – Schedule of live programs

Selectmen's Meeting – Tuesday, Jan. 2, Monday
Jan. 15; Monday Feb. 12, 26 - 7 pm

Water & Sewer – Tuesday, Jan. 9; Feb. 13 - 7 pm

Library – Tuesday, Jan. 23; Feb. 20. - 7 pm

Conservation Commission – Tuesday, Jan. 16;
Feb. 13 - 7 pm

Parks & Recreation – Wednesday, Jan. 3; Feb. 7
- 7 pm

Budget Committee – Wednesday, Jan. 17 - 7 pm

School Committee – Thursday, Jan. 4, 18; Feb. 1, 15

- 7 pm

Planning Board – Thursday, Jan. 11; Feb. 22

- 6 pm

Civil War Round Table – Friday, Jan. 19; Feb. 16

- 7:15 pm

Monday meetings are rebroadcast:

1/2 hour after meeting

Tuesday - 7 am

Wednesday - 11 am

Thursday - 3 pm

Monday - 2 am

Tuesday meetings are rebroadcast:

1/2 hour after meeting

Wednesday - 7 am

Thursday - 11 am

Monday - 3 pm

Tuesday - 2 am

Wednesday meetings are rebroadcast:

1/2 hour after meeting

Thursday - 7 am

Monday - 11 am

Tuesday - 3 pm

Wednesday - 2 am

Thursday meetings are rebroadcast:

1/2 hour after meeting

Monday - 7 am

Tuesday - 11 am

Wednesday - 3 pm

Thursday - 2 am

All dates and times are subject to change. Please consult the ETV Bulletin Board or the Town website for any changes or updates.

Always remember that Board meetings are available any time at your convenience if you go to <http://etv22@pegcentral.com>. They are usually available the day following their "live" broadcast.

"Live" video streaming is also available. Watch live meetings anywhere while they're broadcast: http://etv22.pegcentral.com/live/live_etv22.html.

The new ETV email is eppingtv22@gmail.com

There is now a NEW Website for reviewing Epping meetings online: etv22.viebit.com.



Scouting Around Epping Cub Scout Pack 136

Pack 136 is looking for boys and families who are looking for adventures. Cub Scouting is for

boys entering grades 1 to 5. Cub Scouting has ideals of spiritual and character growth, citizenship training and personal fitness. The Scout Oath is a pledge of duty to God and family. The Scout Law is a simple formula for good Cub Scouting and good citizenship. The Cub Scout motto, "Do Your Best," is a code of excellence. We believe in involving families and Cub Scouting provides opportunities for families to work and play together and have fun together.

If you would like information about joining Cub Scouts, please contact our **Cubmaster** at cubmaster@pack136epping.org.

Join us on Facebook and keep track of the Pack <http://m.facebook.com/group.php?gid=199059685109&fbf=r6c4d2187&refid=46> or go to our website where you can find more Pack information at <http://www.pack136epping.org/calendar>.

Boy Scout Troop 136



In November Epping Boy Scouts camped at a BSA campground just outside Boston from November 17th through November 19th. Saturday the Troop traveled into Boston to hike the Freedom Trail. During the hike they had a chance to earn a Freedom Trail Patch and Pin. This is only offered to the Boy Scouts of America. This special event is supported by Minutemen Council. The Scouts also enjoyed exploring the historical sites of Boston.

In December, the Boy Scouts were active in supporting the Stuff the Bus with the Epping Fire Department on December 11th. They helped by sorting out gifts for the children of Epping. On December 10th they celebrated the holidays by cooking a ham dinner for the Troop and their families at their Court of Honor. This is an annual tradition to celebrate the upcoming holidays with friends and family. The Scouts spent the afternoon cooking and preparing the meals. They finished the night with awards, rank advancements and a Yankee swap.

Upcoming events:

January 12th through 14th they will be attending the Fun Weekend at Camp Carpenter in Manchester.

February 16th through 18th they will be camping at the Freezeout at Camp Carpenter in Manchester.

Submitted by Jennifer Sullivan

Venturing Crew 795

Venturing Crew 795 is a new Scouting unit/youth group for males and females ages 14-20. Those completed 8th grade and 13 may also join. Members can be from any town. We primarily serve the towns of Raymond, Epping, Candia, Fremont, Brentwood, Auburn, and Nottingham. Venturing is a branch of the Boy Scouts of America. How much does it cost? We have an \$18 membership fee that is good for the year. Many of our activities are free, while others have a small cost. We will be doing fundraising to cover some costs of activities.

In Venturing Crew 795 you can: Explore the outdoors and discover new, exciting places including: hiking, trails, boating, nature centers, museums, etc. Earn awards including: ranks, conservation, STEM, physical fitness, leadership, boating, lifeguard, etc. Learn new skills like: fire building, cooking, knot tying, first aid, etc. Become a leader in the crew (elected by your peers) to the following positions: Crew President, VP of programming, secretary, etc. Conduct service projects in the community. Examples could include: trail clearing, cleanup projects, etc. Do career and hobby exploration. Crew 795 also does career and hobby exploration-- tell us about a career or hobby you are interested in learning about and we will try to set something up with an expert! We do day trips.

We try to meet twice a month, normally on a Tuesday or Friday in Raymond. Please contact us for this month's schedule.

Feel free to e-mail or call us for more information venturing795@gmail.com or 895-0469. Check out our website! crew795raymond.scoutlander.com.



Epping Fire Department

The Epping Fire Department has a certified car seat inspector on staff. However, due to a rotating schedule, please call and schedule an appointment at 679-5446.

Burn Permits are required for **all outside burning**. Permits will be issued at the fire station seven days a week, 6:00 am-6:00 pm. Permits **Will Not** be issued when fire danger is class 3 or above.

If you have any questions contact the fire department at 679-5446

For Daily Fire Danger and an explanation of the different danger levels, follow the link <http://www.nhdfi.org/fire-control-and-law-enforcement/daily-fire-danger.aspx>.

Epping Explorer Posts

Fire Department Explorer Post 716

The Fire Department Explorers have had a good year with several members completing training that allows them to ride the apparatus and help at fires. They have sponsored a very successful Red Cross blood drive at the station, attended the Explorer banquet in Concord and some assisted with the Fire Department Stuff the Bus toy drive. Our next meeting will be at the Safety Complex on January 5, 2018. Our members are always ready to welcome new members age 14 to 20. We wish all a Merry Christmas and great holiday season.

What opportunities are in the Fire and Rescue service? At the beginning, learn what the fire and emergency medical service does. We teach new explorers CPR, how to use the self-contained breathing apparatus (SCBA), what the various tools on the fire trucks are used for and much more. Jobs that could be in your future are Fire Investigator, Arson Investigator, Fire Marshal and Forest Fire Warden. Many of our Explorers continue their education at Laconia Community College, nursing schools, also 4-year courses in college. The Explorer post also elects its officers to run the

post. The adults are advisors and training instructors. If this is a field you want to pursue or for more information, call Firefighter Tim Labonte or Captain Cliff Cray at 679 5446 or 396-9436.

Epping NH Police Explorers

This is a hands-on program for youth ages 14-20. It is for those interested in a career in law enforcement or related fields in the criminal justice system. The program promotes growth through character development, respect for the rule of law, physical fitness, good citizenship and patriotism. Please join us in helping to support this local youth program as well as the Child and Youth Program of the SAL.

Youth 14 - 20 may join the Police Explorers by calling 679-5122.

American Legion News

Valentine's Prime Rib Dinner Dance with "The Bert Scott Band"

The American Legion Post 51 is hosting a Valentine's Prime Rib Dinner Dance featuring "The Bert Scott Band" on **Saturday, February 10th**. The dinner includes prime rib and all the fixings. **Only 100 Tickets** will be sold for this Prime Rib Dinner that will be served between 6:00 and 7:30 pm. The tickets **Must Be** purchased in advance for \$15/person. Tickets go on sale on **January 9, 2018**. Please see the bartender in the Canteen at the Epping Legion (679-8320). Tickets will be sold until they run out or until the cutoff date of **February 6th**. This ticket **does** include entrance to the dance that will begin at 8 pm. The Bert Scott Band will be playing 60's, 70's, Rock, Rhythm & Blues!! You can check them out at www.myspace.com/bertscottband Grab your honey and come on down for a great dinner and a rock'n good time. If you miss out on the dinner tickets or you just want to attend the dance which starts at 8 pm, the cost is \$8/person at the door. A cash bar will be open. The event will be held in the non-smoking Harry Bradshaw Memorial Hall of the American Legion on Route 125 in Epping (across from Telly's Restaurant). All are welcome! For more information please call Darlene at 793-6090 or Janet at 944-3288.

Monthly Breakfast Buffets

Monthly second Sunday breakfasts are being held from 8:00 to 11:00 am. Come enjoy our hot

Breakfast Buffets on **Sunday January 14th** and **Sunday, February 11th** – eggs, bacon, sausage, toast, pancakes, home fries, and coffee are all piping hot and ready to be enjoyed. Bring your newspaper and your appetite!

The Buffet is \$8.00 for adults, \$5.00 for children 6 to 12 and children under six are free - worth every penny!

Epping Community Church

Our new Pastor, Reverend Paul Leonard has been leading our church for a couple of months now. Come and visit and hear the word of God that he shares with us every week. Our church service is at 9:00 am every Sunday morning in the sanctuary upstairs. This is followed by a time of fellowship downstairs. You can have a cup of coffee and some refreshments and chat with friends...old and new. Sunday School for all ages begins at 11:00 am. Reverend Leonard is also leading a Bible study on Wednesday evenings at 7:00 pm and also on Thursday mornings at 9:00 am at the church. We are located on the corner of Pleasant and Main Street. We are wheelchair accessible and have an elevator to take those in need upstairs. Come and see what we have to offer during our time of worship.

The Epping Community Care food pantry was very busy during the holiday season. We look forward to 2018 to help those who are in need of a hand up.

We would like to extend thanks to those who helped to make our outreach programs so successful. We are grateful to all of our volunteers who show up week after week to serve the clients at the food pantry. Our program runs solely on donations of food and money that we receive from many individuals and businesses from Epping and other surrounding towns. Thank you....thank you....WE all did a great job in 2017. We could not do what we do without everyone's help.

We have our Coats of Caring program running right now during the cold winter months. Anyone is welcome to come in and get a warm coat at no cost. All coats have been donated by various individuals. We also have lots of hats and mittens and gloves available.

Our Soup of the Day Café is every Thursday from 11:00-12:30. Anyone in the community is welcome to come to this free lunch. We offer two different kinds of homemade soup, a salad,

crackers, dessert and beverage. The conversation is always lively in our Fellowship hall. Come and have lunch with us and visit with old and new friends. We'd be glad to see you.

Our 3rd Saturday dinner in January will be **January 20th**. It starts at 5:00 and goes until 6:30. The menu will be turkey, mashed potatoes, squash, green beans, corn bread and homemade pies. The cost is \$8.00 for adults and \$4.00 for kids. This is always a popular dinner. **February 17th** will be the next 3rd Saturday dinner. Look for details on our church sign on the corner for updates.

St. Joseph Catholic Church

208 Pleasant St. (Rte 27)

Epping, NH 03042

Office telephone: 679-8805

Mass schedule weekdays:

Mon. 8:00 am **Tues, Thurs, Fri.** 7:30 am

Wed. 7:00 pm

Mass schedule weekends:

Saturday 4:00 pm

Sunday 8:00 am, 10:30 am and 6:00 pm

January

Mondays – Adoration – Noon to 9:00 pm

Fridays – 8 am-7 pm

January 5th – First Friday Adoration – 8:00 am-midnight

January 6th – First Saturday Adoration – midnight to 7:45 am

February

Mondays – Adoration – Noon to 9:00 pm

Fridays – 8 am-7 pm

February 2nd – First Friday Adoration – 8:00 am-midnight

February 3rd – First Saturday Adoration – Midnight to 7:45 am

If you have any questions, please call the Rectory Office 679-8805 or check our website at <http://stjosepheppingnh.com> for further information.

Epping Bible Church

Epping Bible Church invites you to join them throughout the week at 243 Pleasant Street in Epping.

Our Sunday mornings begin with a full, free breakfast from 8:00 to 9:15 am, followed by Bible

Emphasis Groups (Sunday School) for all ages at 9:15 am. The Gathering, a time for announcements and to share, is at 10:05 am followed by morning service at 10:45 am. Sunday evening service begins at 5:00 pm. Families are welcome.

Their Bible Emphasis Groups feature classes for all ages, from 2 year olds all the way to adults. A free nursery for children – infants through four years – is provided during the morning and evening services. Children ages four through third grade are invited to Junior Church during the morning service after praise and worship time. The Awana program for children age 3 through sixth grade has begun. The weekly Friday night meetings help children learn about God's Word. For details, please contact Dora Brown at 702-2650 or at awana@eppingbible.org.

Epping Bible Church is located at 243 Pleasant Street. If you have any questions, please contact Pastor Ron Townsend at 247-0405 or at PastorRon@EppingBible.org. Visit their website at www.eppingbible.org.

Providence Baptist Church

410 Pleasant Street, Epping, NH 03042

Phone: 679-8918

Weekly Schedule

Sunday Morning Service at 10:30 am

Wednesday Food Pantry begins at 10:00 am (for first time visitors, please have your photo ID and proof of residency with you)

Wednesday Time of Devotion and Prayer begins at 6:30 pm

(Check schedule for dinner nights!)

For small groups and other events, please check out our website at www.pbcnh.org or contact us at pbsecretary410@gmail.com.

West Epping Quaker Meeting House

The West Epping Meeting grew out of the Seabrook Quarterly Meeting in the middle of the 18th century. Records show that Joshua Folsom was a recorded minister among Friends in the community in 1772 – though he may have commenced his activities even earlier. The present Meeting House was built in 1851. The surrounding tall pines, dating from this period, have been a distinguishing feature of West Epping Village.

West Epping Friends meet for silent worship at 10 am every first and third Sunday of the

month. We welcome visitors to our meetings to join with us.



Harvey-Mitchell Memorial Library

Epping's Public Library

151 Main Street

734-4587 (Adult Dept.)

679-5944 (Youth Dept.)

679-5884 (Fax)

harvmitch@gmail.com

www.eppinglibrary.com

Youth Dept. e-mail: hmmlyouth@gmail.com

Youth Dept. Facebook page:

<http://www.facebook.com/eppinglibrary>

Hours: Monday, Friday – 10 - 5

Tuesday, Wednesday, Thursday – 10 - 8

Saturday – 10 - 2

Sunday – 12 noon - 4

Closed: January 1st – New Year's Day

January 15th – Martin Luther King Day

February 19th – Presidents' Day

Upcoming Events at the Library

Storytime continues on Tuesday and Friday mornings at 11:15 am, with a new story and craft each week!

January 3: Knitting & Handiwork Group - 6:30 pm

The Knitting and Handiwork group will start back up again with the new year—bring your knitting projects, cross stitch, embroidery, crocheting, hand-quilting, etc. to socialize and share ideas with other local crafters. All levels of experience welcome!

January 3: Paws to Read 10:30 am-12:30 pm

Leon returns to the library for a Paws to Read program! Children of all ages are invited to spend 20-minute sessions reading out loud to Leon in order to build confidence and have fun reading in the company of a black lab therapy dog that doesn't judge. Registration in advance is recommended.

January 9, 16, 23, 30: Children's Yoga – 4 pm

Bring the little ones to our Children's Yoga series, taught by Kripalu yoga teacher Leah Pacione. This program is a great way to introduce kids to yoga, or allow them to continue a healthy habit. Each session is a bit different than the last, tailored to the interests of participants and

sometimes taking on playful themes. Just show up in comfortable clothes, ready to stretch and have fun!

January 13: TJ Wheeler Concert: "The Other Side of the Mountaintop," honoring MLK Jr. – 3 pm

Looking into the new year, we'll be starting our winter concert series on Saturday afternoons with the local favorite TJ Wheeler. In commemoration of the 50th anniversary of Martin Luther King's assassination TJ has created a program entitled "The Other Side of the Mountaintop." It will highlight the hopes and work that Dr. King was planning at the time of his death and include the back stories behind the classic Civil Rights anthems as well as the "masked messages" of secular popular folk, soul, and R & B songs on up to the music of today. Examples include: I Shall Overcome, Oh Freedom, People get Ready, and Ain't No Mountain High Enough.

January 16: Dusty Olde Mystery Book Group – 7 pm

The Dusty Olde Mystery Book Group will be meeting to discuss Agatha Christie's *The Body* in the Library, a Miss Marple mystery.

January 18: Great Gardens Lecture Series: Picking the Right Plant – 4pm

We're very excited to start a new series on gardening, presented by Patty Laughlin of Epping's Lorax Landscaping. Our first presentation will be Picking the Right Plant (and planting it in the right place) - Would that gorgeous Hibiscus in your cousin's Carolina garden grow here? How come 'hardy' mums don't come back? Why isn't my blueberry bush producing? These questions and more can be answered by understanding your garden site and a particular plant's needs. Hardiness zones, heat zones, exposure (sun, wind, slope), microclimates, soil type and pH will be covered in this informative talk. It's sure to have you excited about, and prepared for, the spring planting season.

January 26: Art Opening - Margaret Serino - 5-7 pm

The next talented local artist to show her work at the library will be Margaret Serino. Serino, who is an Epping resident and proud member of the Epping Arts Association, creates unique paintings using alcohol inks and "acrylic pours." Alcohol inks

can be added onto a hard surface with alcohol, then manipulated by tilting, blowing with a straw, moving the ink with a piece of cloth, and other ways. Acrylic pours are created by placing different colors one at a time in the same cup, then flipping over onto a canvas; the paint is then mobile and can be tipped or moved with brushes, air, and even fingers. Learn more from the artist herself at our opening reception, and get a chance to see these colorful and exciting pieces up close. As always, we'll have a variety of refreshments and people are encouraged to linger and socialize.

January 30: Contemporary Book Group – 7 pm

The Contemporary Book Group's next title is *The Namesake* by Jhumpa Lahiri. "Moving between events in Calcutta, Boston, and New York City, the novel examines the nuances involved with being caught between two conflicting cultures with highly distinct religious, social, and ideological differences." Copies will be available at the library. New members are always welcome!

February 7: Knitting & Handiwork Group – 6:30 pm

February 10: "Banjos, Bones, and Ballads" Jeff Warner Concert – 3 pm

Traditional songs, rich in local history and a sense of place, present the latest news from the distant past. They help us to interpret present-day life with an understanding of the working people who built our country. Tavern songs, banjo tunes, 18th century New England hymns, sailor songs, and humorous stories about traditional singers and their songs highlight this informative program by Portsmouth-based musician, Jeff Warner. Warner accompanies his songs on concertina, banjo, guitar and several "pocket instruments," such as bones and Jew's harp and has toured nationally for the Smithsonian Institution and has recorded for Flying Fish/Rounder Records and other labels.

February 15: Great Gardens Lecture Series: Preparing Your Garden Soil – 4 pm

February 20: Dusty Olde Mystery Book Group – 7 pm

February 27: Contemporary Book Group – 7 pm

Epping Parks & Recreation

Department News

Home of the "River Otters"

Director: Nicole Bizzaro

Cell Phone: 608-9487

Recreation Dept. Main Phone Number: 679-3006

eppingrecreation@gmail.com

Join us on Facebook and follow us on Twitter.

If you need to reach the Department, please contact Nicole, Recreation Director via email at eppingrecreation@gmail.com or cell at 608-9487.

Now that Watson Academy is open again, we are getting back to business. The Epping Parks & Recreation Department has been busy at work, meeting with potential new instructors and staff to develop future programs and offerings at Watson for the town residents. For more information and to register, please contact the Recreation Department via e-mail at eppingrecreation@gmail.com or visit our website at www.EppingRecreation.org.

Please check out our website and our Facebook page for announcements and program updates.

Preschool Programs

Story Time Discoveries

Literacy based interactive programs for children ages 2-5 with an accompanying adult. Join us for songs, stories and hands-on activities at 10:00 am on Tuesdays. Starting with songs and finger plays to help participants feel comfortable and included, Miss Tracie will read two picture books which introduce the children to a topic that is relevant to their experience in the world. Following the stories will be a fun project using a variety of art media, giving the child something to take home that will hopefully inspire further investigation and more discussion of the topic. These projects can be messy, so although aprons will be available, washable play clothes are recommended. There will also be age appropriate puzzles for the preschoolers to explore as they complete their project.

"Miss Tracie" Wilkins has over 25 years of experience as an early childhood educator, having worked in preschool, kindergarten, children's museum and public library settings.

Ages: 2-5

Day: Tuesdays (ongoing)

Time: 10 - 11 am

Cost: \$30 for 6 classes or \$6 drop in per week

Where: Watson Academy (17 Academy St. - Recreation Center)

How To Register: Please drop in for class or mail in a Registration form to address include on form.

Sports Programs

If you are looking for beginning and advanced team sports-related programs for children ages 5+, please visit the Epping Youth Athletic Association (EYAA) website at www.eyaa.org for sports programs offered in Epping.

Youth Programs

Before & After School Program

The Fall 2017 Before & After School Program Registration was available starting June 1, 2017.

To register, please download Registration Form and Participation Forms from left side of the Parks and Recreation website and mail. Space is limited and If we need to start a wait list, parents will be notified! Please email our Recreation Director, Nicole for further information. at eppingrecreation@gmail.com.

We provide a safe, nurturing place for children to attend quality programming beyond the schools' hours of operation. We strive to help youth reach their full potential by allowing them to explore their physical, social and intellectual interests in a safe and fun setting. The culture of our programs emphasizes quality relationships and a healthy respect for individuality. We provide enough structure to keep everyone safe, but we also offer an open atmosphere that allows children to explore their interests in groups or on their own.

The Before School Program operates on normal school days at the Epping Elementary School gym in the mornings for youth in grades K-7. The program opens at 6:45 am and runs until students leave for their classrooms at 8:20 am! Kindergarteners are escorted by staff. At the program the youth are able to finish homework, work on arts and crafts projects and play games in the gym. The youth are able to eat breakfast with the school breakfast program.

The After School Program gathers at the EES Library, then heads outside to the EES playgrounds during good weather days or walks down to Watson Academy for snack and homework time from 3:15-4:15 pm, during cold or bad weather days. The program then runs organized games and activities from 4:15 to 5:45 pm at Watson Academy and on scheduled days, uses the gym for

PE related programming. The program operates from school dismissal until **5:45 pm**. Children are grouped by grades: K-1, 2-3 and 4-7. This may vary slightly depending on space and child needs in each of the groups.

Grades K-7

6:45–8:35 am—Before School Program at Epping Elementary School Gym

3:15 – 5:45 pm – After School Program meets in EES Library, goes to Playground and Watson Academy, with use of the EES Gym on scheduled days.

Call Nicole for more information at 608-9487.

Martial Arts Programs at Epping Recreation and Elementary School (offered by Epping ATA) **Karate Classes**

Mondays and Thursdays (EMS Gym) 3:10 – 4:15 pm, \$65 per month

For more information or to sign up your child, please contact Mrs. DeNapoli at 674-6599 or email her at eppingata@gmail.com.

ALL beginners receive a FREE Uniform.

Youth Ceramics Class

Day: Thursdays at Watson Academy

Time: 4:30-5:30 pm

Cost: \$20 per 3 week session

8th – 12th Grade CIT program

The program is back again this year. Students who like working with children and want to gain experience may apply to be a Counselor-In-Training. School year and summer positions are available and it's FREE! For an application, please contact the Rec. Dept.

Both the Application and two Reference Forms need to be returned to the Recreation Director at Town Hall, 157 Main Street, for review. Without references (non-related), applications will not be accepted. CIT positions are limited! We will call all applicants in for an initial interview with the Recreation Director and Program Director. The CIT program is not a full summer, full week program. Each CIT will be given a schedule of days and hours they will be assigned to complete their volunteer time with us. CIT's will ASSIST staff in running programs for kids, preparing materials for programs, helping with general clean up after programs and being role models for children participating in programs. Most CIT hours are completed on school grounds (no field trip

hours). If a CIT shows exemplary skills in assisting children during on-grounds programs, we may contact those parents to arrange for field trip volunteer hours.

McIntyre Ski Program

Epping Rec is participating in the McIntyre Ski program starting this January. For information contact the Rec Department:

eppingrecreation@gmail.com.

Register online

at: <http://www.mcintyreskiarea.com/snowsports/registration>.

Summer Camp

We will be running two Summer Camp Programs again this year!

River Otters Summer Camp for kids going into Grades 1-4

Bobcats Summer Camp for kids going into Grades 5-8

6 week program

See camp brochure and parent handbook for more info!

Forms are required for registration for EACH child:

Camp registration comes out on Town Voting Day (March 13th).

Please mail registration to us at 157 Main Street! 1st payment due with registration to reserve your space. Registration is on First Come basis!

Please check our Facebook page for availability updates

Adult Programs

Please check our Facebook page for updates, including cancellations on all programs.

Adult Basketball

Want to play some adult basketball? Come join The Epping Recreation Department for some pick up co-ed basketball in the Epping Middle School Gym on Sunday nights.

Day / Time: Sunday – 7:00 – 9:00 pm

Location: EMS Gym (Use EHS entrance)

Cost: \$30 for 10 nights – Please make check out to the “Town of Epping.” If paying in cash, please bring exact change.

Each participant is required to sign a waiver form prior to playing and payment. Waiver forms will be available at the gym. We will have a sign-in sheet, to keep track of the days used. Once you have used your ten nights, please bring in your next

payment of \$30 for ten additional nights. You will not be allowed to play if we do not have a signed waiver and payment. The payment covers the cost of the staff to provide this program.

We will also notify you via email of any program changes, so please provide a current email address.

Adult Ceramics Class

Day: Thursdays

Time: 9-11 am

Cost: \$2 for ceramic piece

Location: Watson Academy (Upstairs Blue classroom)

To Register, contact the Epping Recreation Dept at eppingrecreation@gmail.com or stop by the program to speak with Barbara Young.

The Porch

Our goal is to demonstrate the unconditional love of God to our community by building relationships, meeting physical and financial needs, and sharing the Gospel of Jesus that transforms lives.

Epping Lighthouse will benefit the community in numerous ways, including:

- Running a youth center for teenagers

- Running a children's after-school program

- Giving financially to families who are in need

- Providing free family counseling

- Organizing various programs for teenagers to service others

Kids Club

Our kids club is for kids in grades 1-5.

We will provide free pick up from EES, and provide snacks and drinks at no charge.

We have a structured time of singing, Bible Time and Game Time.

The club starts at 3:15 and goes until 5:00 pm.

Teen Central

Our Teen Central is geared for grades 6-12.

We offer pool, ping-pong, air hockey, and foosball.

We also have computers, a TV, board games and provide snacks and drinks at no charge.

Teen Central opens at 2:30 and goes till 4:30.

We provide classes and other events throughout the year as well.

We require all of our workers to complete a

background check.

If you are interested, please check us out at www.eppinglighthouse.org or you can e-mail us at eppinglighthouse@hotmail.com to request a form.

Families First

support for families...health care for all

Epping Family Morning Out: *Fridays - 9:30-11 am.* For children ages birth to six with parents or other caregivers. Children will explore age-appropriate crafts and other activities, have positive play with peers and adults and enjoy songs, stories and snack. Facilitator: Patricia Keck. Held at the SAU 14 Building, 213 Main Street, Epping. Cost: It's free! See you there! Advance sign-up not needed.

For information call 422-8208, press 2, or visit <http://www.familiesfirstseacoast.org/programs.cfm>.

Exeter Family Morning Out *Thursdays - 9:30-11 am.* For children ages birth to six, with parents or other caregivers. Children will explore age-appropriate crafts and other activities, have positive play with peers and adults, and enjoy songs, stories and snack. Facilitator: Patricia Keck. Held at Exeter Parks and Recreation (32 Court Street, Exeter). Cost: Free. Pre-registration not needed.

For information call 422-8208, press 2, or visit <http://www.familiesfirstseacoast.org/programs.cfm>.

All parents and children are welcome at our Parenting Classes, Parent-Child Groups and Parent Groups. **Advance registration is needed for most programs and is always needed for childcare;** please go to FamiliesFirstSeacoast.org and click on the Register for Family Programs button, or call 422-8208 x2.

Students in the News

Holiday Art and Writing Contest Winners

It's been more than three decades since the then editor of Foster's Daily Democrat, Rod Doherty, instituted the Holiday Art and Writing Contest. Since its founding, the contest has grown with the participation of students stretching across the Seacoast of New Hampshire and southern Maine. Over that time the contest has also become

more competitive. This year judging was particularly challenging and saw more perfect score award winners than in past years.

There were 40 winners in Writing in four categories: Grades 1 & 2, Grades 3 & 4, Grades 5 & 6 and Grades 7 & 8.

Out of 19 winners in the Grades 7 & 8 Writing category, five were from our Epping Middle School:

Jade Gagnon

Zachary Hodgman

Wyatt Noel

Mikey Picard

Haley Williamson

And **Wyatt Noel** was one of eight perfect scores in writing.

A ceremony to honor this year's winners will be held **Saturday, January 27th** at 9:00 am in the auditorium of the Idlehurst School in Somersworth. (Snow date: **Saturday, February 3rd**) Winners will be notified by email with full details.



School Board Meeting Schedule

The Epping School Board holds regular meetings at 7:00 pm in the Epping Town Hall. The public is invited to attend. Meetings are also televised by ETV. Agendas and minutes are posted on the district website at www.sau14.org under School Board/Agenda & Minutes. ETV is also streaming meetings that you can watch live on your computer at: <http://etv.22.pegcentral.com>.

January 4th and 18th

February 1st and 15th

Epping Elementary School (EES)

EES School Calendar

JANUARY

Jan. 2 – Classes resume

Jan. 8 – PTO meeting 7:00 pm in the EES Art Room. Free babysitting in the Library.

Jan. 12– **NO SCHOOL**-Professional Development Day

Jan. 15– **NO SCHOOL** – Martin Luther King Day

Jan. 17 – 1st Annual EES Geography Bee, second round

Jan. 19– Child Find Clinic – 1-3 pm

Jan. 24 – National Elementary Honor Society

ceremony for 4th grade inductees in EES gym at 6:30 pm

Jan. 26 – Snow date for Child Find Clinic

FEBRUARY

Feb. 1 – “I Love to Read” month begins

Feb. 5– PTO meeting 7:00 pm in the EES Art Room. Free babysitting in the Library.

Feb. 15– Scholastic Book Fair in Library 6-7:30 pm
PTO Ice Cream Social - 6-7:30 pm

Feb. 21– Kindergarten Information Night 6-7:30 pm

Feb. 26-Mar. 2 – **NO SCHOOL** – **WINTER VACATION**

A big thank you to the Epping Lions Club who helped our students by holding a vision screening Thursday, November 30th. Many thanks for their efforts!

EES 1st Annual Geography Bee



Eight Fourth and Fifth Grade students participated in the first ever EES Geography Bee. Congratulations to the top five scorers: Evan Deloge, Piper Gagne, Jordan Guarente, Sawyer Idell and Parker Irving. These students move on to the next round on **January 17th**.

The Epic Lego Wall is Up!



A big thank you goes out to the PTO for purchasing the Lego baseplates and George Kimball and the Facilities Department for assembling and installing the wall in the Library Media Center.

Epping Middle School (EMS)

EMS Holiday Concert

On December 19th the EMS Band and Chorus performed for the community a combination of holiday favorites and jazz arrangements. They played to a packed house! Thank you to TEMPO, John Ludwig, Brian Freed and most of all our students for a fantastic performance.



Epping Middle School Jazz Band getting us all in the holiday spirit!



Epping Middle School Band rocking the house!



Epping Middle School chorus singing their best! Beautiful voices!

Friends Helping Friends



Friends Helping Friends (FHF) is a nonprofit organization at Epping Middle School that provides financial assistance to our students living with long-term illnesses. Students have used the funds to buy adaptive equipment, purchase gas for the trips to Boston hospitals, and to purchase laptop computers to continue their studies while

hospitalized. FHF conducts various fundraisers throughout the year. They have been selling holiday covered Tootsie Pops for \$1 to support their efforts.

S-P-E-L-L-I-N-G BEE



From left to right: Morgan Witmer and Abigail Purchas

Congratulations to this year's winner, Abigail Purchas and our runner up, Morgan Witmer for winning this year's Spelling Bee. Abigail won this year's bee with the word - *mandible*. Our winner will participate in the State Spelling Bee sponsored by the NH Union Leader, **February 24th** at the Capitol Center for the Arts in Concord, NH.

First Quarter Honor Roll

6th Grade:

High Honors:

Dylan Dulong, Isabella Greubel, Chanah Katz, Casey Morin, Autumn Patterson

Honors

Ayla Bennett, Aviendha Blakney, Jessica Brassil, Daniel Ciriello, Abigail Deary, Scarlett Demars, Colin Hallinan, Cameron Hansen, Amelia Harper, Wyatt Idell, Lauren Johnson, Shawna Lin, Lillian Long, Autumn Loving, Myleigh Martin, Maelie McAniff, Malaney McAniff, Sarah McTague, Rachel Peirce, Aidan Rossel, Annabelle Shumway, Skyler Simard, Logan Snyder, Charlize Stevens, Jasmine Terrio, Jacob Twombly, Delaney Yates, Ryan Zheng

7th Grade:

High Honors:

Brooke Bacon, Cooper Bernier, Ta'lisha Burnett, Leah Hackett, Daniel Johnson, James Le, Nathan McTague, Sophia Morang, Miriam Peck, Luke Snyder

Honors:

Riley Ahlschlager, Sophia Bade, Devan Bartlett, Kaelin Beattie, Maddison Beltran, Krystal Brown, Kaitlyn Chapman, Aidan Colban, Benjamin Craig,

Hull, Emma LaChapelle, Brady Lewis, Cassidy
Lustenberger, McKenzie MacDonald, Cole
Mackenzie, Mackenzie Milbury, Pacy Morgado,
Dillin Munroe, Brooke Needham, Lindsey Parents,
Miriam Peck, Maiya Poloian, Brady Powicki,
Annalee Roy, Carly Sanborn, Lilly Sheerin, Olivia
Sousa, Christopher Sullivan, Sarrah Wilkins, Aaron
Wyatt

Epping Calendar of Events for January 2018

January 1	NO SCHOOL Town Hall and Library closed for New Year's Day
January 2	Classes resume
January 3	Providence Baptist Church Food Pantry – 10 am
January 3	Knitting and Handiwork Group at Library – 6:30 pm
January 3	Paws to Read at the Library – 10:30 am -12:30 pm
January 4	Epping School Board meeting in Epping Town Hall – 7 pm
January 6	Epping Community Church Food Pantry and Coats of Caring – 8-10 am
January 8	EES PTO meeting – 7 pm
Jan. 9, 16, 23, 30	Children's Yoga at the Library – 4 pm
January 9	Tickets go on sale for American Legion Valentine Dinner & Dance on February 10 th
January 9	Last day for Petition Warrant Articles
January 10	Public Budget Hearing
January 10	Providence Baptist Church Food Pantry – 10 am
January 11	Epping Watson Academy Seniors – 1 pm
January 12	NO SCHOOL – Teachers Professional Development Day
January 12-14	Boy Scout Fun Weekend at Camp Carpenter
January 13	Epping Community Church Food Pantry and Coats of Caring– 8:00-10:00 am
January 13	TJ Wheeler Concert at the Library – 3:00 pm
January 14	American Legion Post 51 Sunday Breakfast Buffet – 8:00-11:00 am
January 15	NO SCHOOL Town Hall and Library closed for Martin Luther King Day
January 15	Leddy Center beginners (ages 7-9) classes begin with Danielle Stough – 4:00-5:00 pm
January 16	Dusty Olde Mystery Book Group at the Library – 7 pm
January 17	Providence Baptist Church Food Pantry – 10 am
January 17	Leddy Center beginners (ages 5-6) classes begin with Danielle Stough – 4:00-4:50 pm
January 17	1 st Annual EES Geography Bee, second round
January 18	Great Gardens Lecture Series at the Library – Picking the Right Plant – 4 pm
January 18	Epping School Board meeting in Epping Town Hall – 7 pm
January 19	Civil War Roundtable of NH meeting in Town Hall – 7:15 pm
January 19	Leddy Center classes begin with Melissa Ransdell – 3:30-4:30 pm
January 19	EES Child Find Clinic – 1-3 pm (Snow date: January 26)
January 20	Epping Community Church Food Pantry and Coats of Caring – 8-10 am
January 20	Epping Community Church Dinner “Roast Turkey Dinner” – 5:00-6:30 pm
January 23	Library Board of Trustees Meeting – 7 pm
January 23	Epping Lions Club meeting at the Library – 6:30 pm
January 24	EES National Elementary Honor Society ceremony for 4 th grade inductees – 6:30 pm
January 24	Providence Baptist Church Food Pantry – 10 am
Jan. 24 - Feb. 2	Filing period for Town offices
January 26	Art Opening at the Library for Margaret Serino – 5-7 pm
January 27	Ceremony for Holiday Art & Writing Contest winners in Somersworth – 9 am
January 27	Epping Community Church Food Pantry and Coats of Caring – 8-10 am
January 30	Contemporary Book Group at the Library – 7 pm
January 31	Providence Baptist Church Food Pantry – 10 am

Epping Calendar of Events for February 2018

Date	Event
February 1	EES "I Love to Read" month begins
February 1	Epping School Board meeting in Epping Town Hall – 7:00 pm
Jan. 24 – Feb. 2	Filing period for Town offices
February 3	Epping Community Church Food Pantry and Coats of Caring – 8-10 am
February 5	EES PTO meeting – 7 pm
February 6	Town Deliberative Session
February 7	Providence Baptist Church Food Pantry – 10 am
February 7	Knitting & Handiwork Group at the Library – 6:30 pm
February 8	School Deliberative Session
February 8	Epping Watson Academy Seniors – 1 pm
February 10	Epping Community Church Food Pantry and Coats of Caring– 8-10 am
February 10	Jeff Warner Concert at the Library – 3 pm
February 10	American Legion Valentine's Dance and Prime Rib Dinner
February 11	American Legion Post 51 Sunday breakfast – 8:00-11:00 am
February 11	Epping Garden Club meeting
February 14	Providence Baptist Church Food Pantry – 10 am
February 15	Epping School Board meeting in Epping Town Hall – 7 pm
February 15	Great Gardens Lecture Series at the Library – Preparing Your Garden Soil – 4 pm
February 15	EES Scholastic Book Fair in Library and PTO Ice Cream Social – 6-7:30 pm
February 16	Civil War Roundtable of NH meeting in Town Hall – 7:15 pm
February 16-18	Boy Scout Freezeout at Camp Carpenter
February 17	Epping Community Church Food Pantry and Coats of Caring– 8-10 am
February 17	Epping Community Church Dinner – 5:00-6:30 pm
February 19	Town Hall and Library closed for Presidents' Day
February 20	Library Board of Trustees Meeting – 7 pm
February 20	Dusty Olde Mystery Book Group at the Library – 7 pm
February 21	Kindergarten Information night – 6-7:30 pm
February 21	Providence Baptist Church Food Pantry – 10 am
February 21	Candidates Night
February 23	DEADLINE DATE for the March-April issue of the Newsletter
February 24	Epping Community Church Food Pantry and Coats of Caring – 8-10 am
Feb. 26 - Mar. 2	NO SCHOOL – WINTER VACATION
February 27	Epping Lions Club meeting at the Library – 6:30 pm
February 27	Contemporary Book Group at the Library – 7 pm

If you would like your next event to appear on the Calendar of Events, please send an email to bhelmstetter@comcast.net by **February 23, 2018**. Please include the date, event name, location and time.